

Seashell Matters

Bicentenary Special Edition 2023



Patron Her Late Majesty Queen Elizabeth II

Contents

Hello and welcome	3
The Seashell Story	4
A key moment in our history	6
Meet the artist...Armaghan	7
Our people	8
CADS is 20!	10
Challenge 200	11
A rich history to be explored	12
Donate	13
Thank you!	14
What's on in 2023	

[Back page](#)

Hello & welcome

to the **Bicentenary Special Edition** of Seashell Matters

It gives me great pleasure to welcome you to our special Bicentenary edition of Seashell Matters, in our 200th year as a charity supporting children and young adults with the most complex learning difficulties, disabilities, and additional communication needs.

This year we are celebrating the many wonderful milestones and achievements of the Trust, not to mention the people that have helped shape Seashell into the amazing place it is today. But in true Seashell fashion, we are also looking forward to the future, exploring ways in which we can create even better experiences for our students and community.

In February we celebrated the opening of the Moulding Foundation Building, a world-class facility that is the new home of Royal School Manchester. It proudly boasts a new swimming pool, hydrotherapy pool and dining hall that are shared with Royal College Manchester and our wider community. The new facilities have made an immediate impact, providing the very best environment for our students to develop and grow and enhancing the lives of those we support.

Not a charity to stand still we are excited to be embarking upon the next stage in our campus transformation - a new home for Royal College Manchester, a dedicated learning, development, health and wellbeing hub for our staff and inclusive sports and activity facilities for our community. We are looking forward to sharing our journey with you.

Not only is 2023 a big year for our charity it also marks the 20th anniversary of our award-winning inclusive activities community programme, CADS - a much needed and widely regarded service offered to families with children who may not be able to access this type of recreational activity elsewhere.

As we approach the end of the academic year we have so many exciting events to look forward to. The North West regional games, delivered by Royal College Manchester in partnership with Natspec, takes place again in June and sees students from specialist colleges across the region compete alongside each other in what is a fantastic celebration of sporting participation and achievement. We are also looking forward to the fun and festivities that mark the end of the school and college year and to wishing all the very best to those students and their families who have completed their education at Seashell - though it's always sad to say goodbye there is so much to celebrate.

As ever, the amazing journey we are on would not be possible without our generous supporters. I want to take this opportunity to thank you, we truly appreciate all that you do through your kind donations. Your support enables us to continue providing education, care, and support at our outstanding school and college, our residential homes, and through our health and wellbeing services and community facilities.



Brandon Leigh
Chief Executive, Seashell



**One word.
One Seashell.**

As part of our Bicentenary celebrations, we have been reflecting on all the fantastic people that together, make Seashell the special place it is today

We asked our amazing staff team, students, supporters and the community to share one word that sprung to mind when they thought of Seashell. There were some fantastic responses, from 'Aspirational' to 'Lifeline', to 'Seashellational'! watch out for more on the coming pages of this publication.

What does Seashell mean to you? Let us know by emailing communications@seashelltrust.org.uk



The Seashell Story

1800's

Our charity's contributions made a nation-wide difference to the education and lives of Deaf children.



1823 ↓ Our story starts on **11th June 1823** when Robert Philips and William Bateman established a charity for the education and care of Deaf children. The first school opened in rented accommodation in Salford in **1825**.

1837 ↓ A new school in Old Trafford opened the same day Queen Victoria ascended the throne.

1880 ↓ The first experimental audio-phone was used at our school, helping Deaf students to improve their hearing.



1897 ↓ During her Diamond Jubilee, Queen Victoria bestowed royal patronage on the school.

In **1893** after pressure on the government from school President, Lord Egerton of Tatton, legislation was passed extending state education to Deaf children.

1920 ↓ Students from the Deaf Education department at the University of Manchester began their teaching practice at our school.

1900's

Our charity's contributions made a nation-wide difference to the education and lives of Deaf children.

1929 ↓ This relationship saw the first **audiometers** (a medical device used to evaluate hearing thresholds) **being used with our students**.

1950 ↓ Our charity moved to its current site in **Cheadle Hulme**.

Increasing numbers of Deaf children with additional needs, whose needs could not be met elsewhere, joined the school.

Enid Jones laying the foundation stone of 'Dockray' in 1954



What's next? Securing the future of Seashell...

We are diving straight into the next phase of our campus transformation with the development of a new **Royal College Manchester**. The ambitious transformation of our campus is only possible thanks to the generous support from individuals, companies, trusts and foundations, to whom we are **incredibly grateful**.

2023 ↑ The **Moulding Foundation Building**, home to **Royal School Manchester** opened, offering Seashell students, staff and the community access to amazing new and inclusive facilities.

2022 ↑ We opened our one of a kind inclusive cycle track, **The Bradbury Cycling Centre**.

2020 ↑ Permission for our **new school** and **campus redevelopment** was granted.

2018 ↑ We installed a new, **all-weather sports pitch** for use of both our students and the local community.



£10m investment saw the opening of **Sir Norman Stoller Way**, a close of 17 home-from-home houses for the students who reside on campus.

2015 ↑

Recognising the need for improved accommodation and facilities, our **Transforming Lives Appeal** was launched in **2014**.

2008 ↑ We changed our name to **Seashell**, to both honour our roots as a school for Deaf children (the shell-like shape of the cochlear/inner ear) and to reflect our changing student population.

2000's

The 21st Century has seen further changes to our charity and those who we support...



2005 ↑

CADS, our inclusive sports and wellbeing programme was established.





a key moment in our history

Thursday 20th April 2023 was definitely a night to remember as we officially opened the Moulding Foundation building, the new home to Royal School Manchester.

It was a time for celebration as we were joined by key patrons of our charity, including the Mason family, the Zochonis Charitable Trust and Michael Josephson MBE. Many of our supporters have had the honour of a classroom or facility named after them. We extend huge thanks to the Moulding family, who officially opened the building named after their foundation, with a mosaic key made by Seashell students.



Guests were given a tour of the new state-of-the-art facility, and

also heard about the next phase of our campus transformation; the development of a new building for Royal College Manchester, as well as new training facilities for staff and additional community sports facilities.

CEO Brandon Leigh said: **“We have already been told that the Moulding Foundation Building will set the gold standard for special schools in the UK. We are now committed to delivering the next phase and replicating the quality of Royal School Manchester with Royal College Manchester on this campus in the very near future.”**

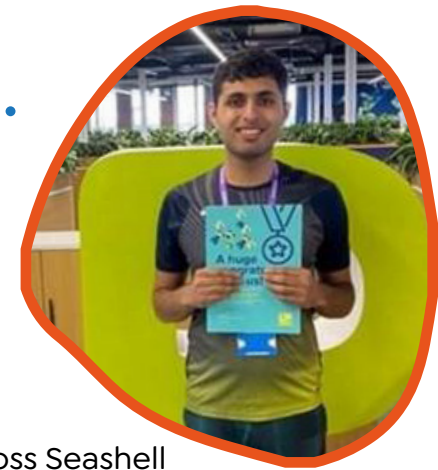
Invitations for the event were designed by Seashell student, Armaghan. Read more about his story on the next page...



Meet the Artist... Armaghan



Armaghan, a final year student at Royal College Manchester is recognised across Seashell for his impressive artistic talent.



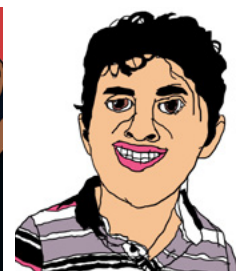
He works digitally to create detailed drawings of the world around him and things that catch his eye. He finds joy in capturing objects, people and places.

and learning. Armaghan can work for hours on a project and he does not get distracted once he is absorbed in his work.”

Armaghan’s family recognised his talent at an early age and said: **“Art is one of his favourite pastimes - it’s his passion. He has created art from a very young age and has taught himself to draw various things, and has a real eye for intricate details - this attention to detail is reflected in the fantastic work he produces. This has continued to improve since he discovered digital media. This is a new medium which he is still exploring**

Armaghan accesses art workshops with Venture Arts every week to help him expand and explore his creative skills and discover potential career paths. This opportunity led him to showcase his artwork at The Nextdoor Gallery in Manchester - his first external exhibition. He is also an artist in residence with the charity ‘Outside In’ who work with the Whitworth Art Gallery and Venture Arts.

“Armaghan’s career as an artist is now underway and has successfully sold some of his exhibited work. It has been fantastic to see his passion and love for Art explored further and develop during this time.” - Caroline Swaffer, Learning Support Assistant.



The people who make Seashell

As we celebrate our Bicentenary, we shine a light on some of the people who have shaped, and have been shaped by our charity.



“Seashell means a lot to me, and I am so pleased to have an Ambassador role. Seashell will always be a part of my life and so will the staff and the students.”
- Mollie Murphy, Seashell Student Ambassador

“Seashell holds a very special place with our colleagues at Together. The charity is inspiring, enabling the students independence through the best care, development and teaching. Together would like to take this opportunity to wish them the very best in achieving their 200 years milestone.” - Kevin Fisher, Together Group People Director



“Working at Seashell is so inspiring and I’m proud to have been part of the Active Team for 10 years. My amazing colleagues put their heart and soul into supporting our students...I’m excited to see what the future holds.”
- Clair Ravenscroft, Lead Internal Swim Instructor

“The beauty of Seashell, is that they have all different facets to their care, all there on one site. We as a family built the foundations of Evie’s [our daughters] life, but then it was Seashell that built the Cathedral. This great tower that she is now - she stands, she walks, she learns, she’s happy.”
- Paul Gilbert, parent of Seashell student and resident



“We now have a world-leading school, and everyone is so proud of the facility. What we now want to deliver on campus is an amazing college. The children and young adults that we work with absolutely deserve the very best that we can give them, and that’s what drives everyone who works at Seashell.”
- Brandon Leigh, Seashell CEO



Jenny Ritchie

Children’s Short Breaks,
Registered Manager

Meet Jenny Ritchie! Jenny has been a member of **#TeamSeashell** for 14 years, and during that time, has helped make a difference to the lives of many children and young adults who call Seashell their home. Hear her story...

“ I applied to be on bank in 2009...I did three shifts and immediately knew I wanted to become a permanent member of staff. Within a year I was promoted and started my climb on the career ladder. Progressing to Senior, House Manager, Assistant Manager and now Registered Manager.

it is also so rewarding. Be bold, be engaging, be proud and most importantly, show you care. That will help you make strong relationships.



The short breaks team is small but mighty and this year we achieved an Outstanding grading from Ofsted. I’m so proud of the team, who work really hard to ensure the children we care for have the best outcomes, not to mention the close partnerships we build with each family we support.

We receive generous support from donors, this allows us to plan fun activities for our residents. This truly makes a difference to each child’s experience and we are grateful to the friends of Seashell who make this possible.

A memorable moment for me was when we made the big move from the old residential buildings to the new amazing homes on Sir Norman Stoller Way. It really made a huge difference to the way we work.

A fun fact about me is that I absolutely love camping and thrive on being out amongst nature – I have even camped in my garden!

Some advice I would give to a new member of staff is to simply laugh and enjoy! Care can be challenging, but





CADS is 20!

CADS is Seashell's inclusive sport and activity programme and has been providing opportunities for children with profound and multiple disabilities for over 20 years.

The programme, which first started in 2003, began as a one-off week of summer holiday activities, to bring children and young adults to Seashell to take part in activities with students and residents. The event quickly grew in popularity as there seemed to be nothing of its kind being delivered locally.

Over the years, CADS has developed and adapted to suit the needs of those who attend, and our CADS Crew are specially trained to ensure all activities are fully inclusive. The programme is constantly evolving in the best interests of all involved.

Sessions take place every Saturday, as well as during academic holidays, and the programme is one of very few provisions

that is able to offer one-to-one support for participants. This level of support is essential for some of the children and young people who attend, however is so frequently hard to come by.



CADS makes a huge difference to so many families; one parent said: "It has been life changing for us as a family - thank you."



Challenge 200

For our Bicentenary year we are launching our **Challenge 200** initiative, to raise vital funds to support the children and young adults at Seashell. **Take part and become a Seashell Superhero!**

Ways to get involved might include a physical challenge, teambuilder or networking activity. We have put together some ideas to help get you started using the numbers 200, 2023 or 1823 as a nod to our Bicentenary...



Why not set a target of running, walking or wheeling **200km** in a month, **20km** in a week or even aiming for **2.3km** each day.



Set a cycling challenge for your family, friends, cycling group or colleagues. In a relay, see how far you can get in **23** hours!



Have a clear out and sell **23** of your items on Ebay, Vinted or Facebook Marketplace and donate the money to Seashell.

Why not truly put yourself in the shoes of the children and young adults at Seashell and set some challenges

around disability awareness. Set a challenge to learn **23** words or phrases in sign language, take part in an activity blindfolded, or do a sponsored silence.



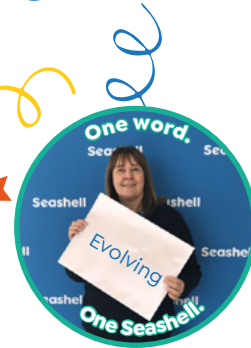
Are you a baker? Perhaps you could bake **200** cupcakes and sell them for £1 each?



Give up your favourite treat for **23** days and donate the money you have saved...or get people to sponsor you!



Please do get in touch if you want to discuss your ideas, we are here to help! Contact: fundraising@seashelltrust.org.uk





A rich history to be explored...

Karen Hugill connected with Seashell whilst researching her great grandmothers life story. She now plays an important role in helping explore Seashell’s historical archives.

“As an amateur with an interest in family and social history, I was researching my great grandmother, Sarah Jane Holden. I had found from a census that she was deaf from birth, so I started to enquire about deaf schools in Manchester. This led me to contact Seashell, who put me in touch with Trustee, Ed Baines to assist me in my research.

Sarah was from a poor family and her father had died when she was very small. Her mother applied for support from the local church and she was fortunate to be awarded a place at the Royal School for the Deaf in the late 1880’s.



When Ed was writing his book, ‘A Beacon of Hope’ I showed him a photograph of my late great grandmother at her ‘graduation’ (left) and was surprised to find that it was the only photograph he could trace from that

time! Her photograph and story now sit proudly on page 55 of the book.

I have also been transcribing many pupil registers on behalf of Seashell and the Manchester and Lancashire Family History Society (MLFHS) and I find it both interesting and rewarding. Ed and I are members of MLFHS, so it has been a pleasure to be able to dive into the archive cupboards (apart from the spiders!) and assist in creating the history display for Seashell’s bicentennial celebrations.

I suppose my emotional connection to Seashell comes from an appreciation of my great grandmother’s deafness (my great grandfather was also deaf), as am I in one ear. Supporting Seashell feels like some ‘payback’ for the support the school and church gave my family all those years ago when times were very different.



Donation form 2023

We’re so pleased you’d like to help children and young adults with complex learning difficulties, disabilities, and additional communication needs. We’ll use your details to fulfil your request. We may contact you again by post or phone to tell you more about our services and other ways you can help, including opportunities to donate, volunteer or fundraise.

Please tear off and return your donation in the Freepost envelope provided or send to Seashell Trust, Stanley Road, Cheadle Hulme, Cheshire, SK8 6RQ.

Title: _____ First Name: _____ Surname: _____

Address: _____

_____ Postcode: _____

Email: _____

I would like to make a donation of: £20 £50 £100 Other amount: _____

I enclose a cheque (please make payable to Seashell Trust)

I would like to donate by credit/debit card

You can also donate on our website www.seashelltrust.org.uk

Please leave a telephone number below and we will call you to take your donation, or call us on **0161 696 9384**.

Your contact telephone number: _____

To provide ongoing support to Seashell I’d like to set up a regular gift - please send me a standing order form.

Staying in touch

Please let us know if you’re also happy to hear from us by email and text.

Yes I’d like to hear from you by email

Yes I’d like to hear from you by text

We promise to keep your details safe and never sell or swap them with anyone. Our privacy policy explains how we keep this promise. If you don’t want to hear from us, or change your mind about how we contact you, email info@seashelltrust.org.uk or call 0161 610 0171.

If you are a UK taxpayer your donation will be worth 25% more!

Gift Aid is reclaimed by the charity from the tax you pay for the current tax year. Your address is needed as a current UK taxpayer. I want to Gift Aid my donation and any donations I make in the future or have made in the past 4 years to Seashell. I am a UK taxpayer and understand that if I pay less income Tax and/or Capital Gains Tax than the amount of Gift Aid claimed on all my donations in that tax year it is my responsibility to pay the difference. (please tick box)





THANK YOU!

Over the last 200 years, our charity has been able to provide children and young adults with the most complex needs the very best education and care thanks to generous supporters like you.

From our first major donor, John Pendlebury of Eccles Old Road, Salford, whose legacy gift of £27,000 in 1881 (approximately £2.5million today!). This incredible donation enabled our charity to extend it's school in Old Trafford to accomodate more children, better facilities and educational staff.



The schools at Old Trafford as extended by the Pendlebury Wing.

Since then, we are proud to call a whole host of amazing individuals, organisations, trusts and foundations friends of Seashell. With your support, we can continue on our mission to ensure children and young adults with complex needs are able to access inclusive opportunities and prepare for a happy and fulfilled adult life.

Look at what your support has helped us achieve...



Fundraising makes sure that our students and community have the very best chances, thanks to specialist equipment, fantastic facilities, and as many life experiences as possible.

Project Transformation

We have been able to embark on an exciting journey to redevelop our campus. These new and improved facilities have been specifically designed with the complex needs of our students and residents in mind and make a huge difference to their day-to-day lives.

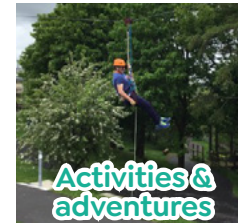


Life experiences

At Seashell, we believe that **all** children and young adults should have the opportunity to get out and about, enjoy adventures and learn about the world.



Specialist equipment such as Lilly's gait trainer means that she can feel the rhythm and actively take part in school dance sessions.



Off site **activities and adventures** like our annual trip to Bendrigg can be truly life changing for our students as they get to enjoy a range of fun filled inclusive activities from climbing walls, to canoeing, to whizzing down zip wires like Hannah!



All students at Seashell are



encouraged to consider their future aspirations, through

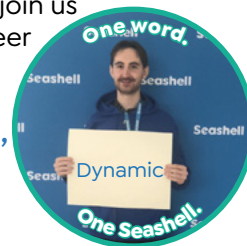
employment and internship

experiences, and thanks to a number of organisations, we are able introduce students like Jon to the world of work.

Having a team of **health and wellbeing** professionals with access to specialist equipment on site means that we can offer a holistic support network to our students, who like Jack, often can find change and transitions challenging. Fundraising helps ensure that we are able to continue growing this provision both for our students and our community.

Help us continue the legacy...

There are so many ways you can support Seashell, whether you want to take on one of our fundraising challenges (check out our family Facebook challenge!), join us for a corporate volunteer day, support our raffle, or simply make a donation...**big or small, we are so grateful!**



What's on

dates for the diary in 2023

Keep up to date with what's going on at Seashell by visiting our website, following us on social media, or signing up to our e-newsletter!

Fundraising events

Run 31 in July – sign up for our family Facebook Challenge and run, walk or wheel 31 miles in July.

Snowdon at Sunset
Thursday 6 July

Seashell Golf Day
Thursday 7 September

Have an idea for a fundraising event or challenge? We'd love to help you make this a reality! Contact fundraising@seashelltrust.org.uk

Community events

Our summer fair, **Seashell Shine**
Saturday 17 June (free entry!)

CADS Cycling Sessions
Inclusive family drop in sessions on The Bradbury Cycle Centre. Every Monday 5-7pm Contact our inclusive cycle development officer for more information wesley.ratcliffe@seashelltrust.org.uk

Seashell Student's Career Showcase
Wednesday 21 June, 9:30-11:30am
Find out more about providing work placement opportunities at your organisation. For more info, contact nicola.brown@seashelltrust.org.uk

Learn with Seashell

Makaton Taster
15 June 1pm – 2:30pm

Tactile Communication
16 June 9:30am – 12:30pm

Makaton Level 3&4 (4 day course)
21, 22, 28, 29 June, 9am – 12:30pm

Sleep Success
4 July, 10am – 2pm

Makaton Level 1&2 (2 day course)
12 & 13 July, 9:30am – 4pm

For more information or for bespoke training and support requests contact outreach@seashelltrust.org.uk

We also have new BSL and Signalong courses starting in September, please contact LandD@seashelltrust.org.uk for more information and to book.

Keep up to date with what's on at Seashell by following us on social media, visiting our website events page or signing up to receive our monthly e-newsletter!

seashelltrust.org.uk

Seashell

