

Seashell

Transforming Lives Appeal



Seashell 200

—1823 - 2023—

Our vision is for Seashell to be one of the most inspirational settings in the world for the education and care of children and young adults with the most complex needs.

For 200 years, since 1823, the charity has been giving these children and young adults, whose potential to achieve is too often overlooked, the very best start in life.

Our exceptional teams achieve exceptional results despite the challenges of working in some buildings which date back to the 1950s when we provided for a very different student cohort of deaf children.

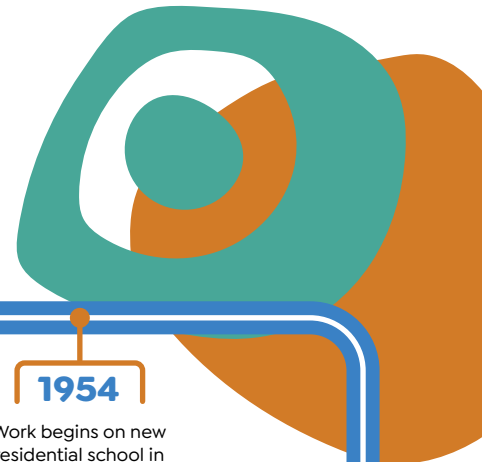
Emulating the ambition of our founders, the charity has pledged to redevelop the entire campus to create facilities that are the envy of the world. After all, extraordinary young people deserve extraordinary places in which to learn.

The first two phases of the campus transformation are complete and we are now ready to embark on the next phase, the development of a new building for our Royal College Manchester and new inclusive community sports facilities.

“I honestly can’t think of anything (Seashell could do better). They really treat him as if he can do anything and it makes him think he can do anything. They’d support him through it, if he couldn’t.”

Parent – quote from September 2022 CQC Outstanding Seashell Health Service inspection report

Proud of our past. Building for the future



START

1823

Following a public meeting of Manchester bankers, merchants and manufacturers, Robert Phillips and William Bateman founded a charity to educate deaf children and opened the first school in Salford.



1837

Due to growth in demand for places, charity opens purpose-built school in Old Trafford, Manchester. 60 years later Queen Victoria bestows Royal Patronage upon the charity.



1905

Charity opens industrial school to prepare students for employment.



1954

Work begins on new residential school in Cheadle Hulme, Cheshire.



Charity adapts to cater for deaf children with additional needs.

1970s



Seashell Trust Patron, Her Majesty The Queen, makes first visit to charity to meet students.

2004



Sir Norman Stoller Way, a close of 17 new homes, completed 18 months ahead of schedule.

2016



Moulding Foundation Building, new home for Royal School Manchester, opens.

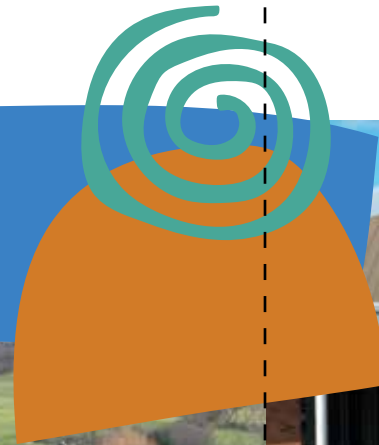
2023

Our achievements so far ...



Living away from home

The first phase of our site transformation was building Sir Norman Stoller Way, a close of 17 new homes for the children and young adults who live at Seashell. We achieved this £10million development ahead of schedule thanks to the remarkable generosity of a number of philanthropists, companies and grant-making trusts. Opened in 2015 these houses are still best-in-class offering the finest care for those whose only option is to live away from their loving families.



Special needs schooling at its very best

The Moulding Foundation Building, new home to our Outstanding (Ofsted 2022) Royal School Manchester, opened in February 2023, our Bicentenary year. We believe there are no limits to what our students are able to achieve.

Special education needs organisations nationally are keen to showcase our facilities and expertise as the new gold standard.



Next steps

A new home for Royal College Manchester

The current college building, despite numerous adaptations over the years, presents numerous challenges for the student population of today. The building undermines our ability to deliver the very best teaching and learning.

The design of the building limits the number of students we can accommodate and so we are having to turn families away who could benefit from a place for their child in our college. A situation we only expect to get worse as demand grows for places.

A new building is now imperative so that these extremely vulnerable young adults are given the learning opportunities they deserve to prepare them for a life in the community beyond education enabling them to make a valuable contribution. Part-time supported employment is a realistic ambition.

A dedicated hub for our staff

Attracting the very best staff to work at Seashell is central to the delivery of exceptional education and care. With some 600 staff, including waking night staff, the provision of quality training is essential to maintain standards and offer career progress within the charity. Recruitment and retention has never been more important. Without a dedicated facility utilising the latest interactive remote learning (many of our staff work at weekends and at night) we will struggle to be an employer of choice for people seeking a career in this sector.



Inclusive sport and activity for the community

Physical activity is very beneficial for all children and young adults, even more so for those with complex needs who, due to their conditions and medical routines, struggle to access local facilities with staff who understand their needs. A new sports hall with a climbing wall (a very popular activity amongst our students) and a large fitness suite will perfectly complement the learner and hydrotherapy pool in the new Moulding Foundation Building.

All these will be available to the local community as part of Seashell's award-winning, inclusive sport programmes.

Meet Evie

Royal College Manchester changes young lives. Imagine the difference a state-of-the-art new building could make to Evie and so many others whose potential is yet to be realised?

Evie is a young woman with the most complex needs. With limited verbal communication, acute medical needs and restricted mobility, her local school felt they could do no more for her education. Evie's parents felt very differently but there was nowhere local to home that had the expertise required as well as the option of residential care if needed.

Having met with the team at Seashell it was clear that a residential place would be ideal for her.

Whilst attending our school and college, Seashell has supported Evie to communicate effectively using the latest assistive technology as well as developing independent living skills and attending regular work experience at a local company.

She and her family can now look forward to a much brighter future where Evie can live with support in the community and hopefully take on part-time paid employment with a job coach.



“Evie has a rare genetic disorder called CHARGE which means she is deaf and blind, has an eating disorder together with complex learning difficulties and physical disabilities.

The beauty of Seashell is that it has the education and care for your child all on one site. Since attending the school and then the college, her intellectual development has shot up.

My late wife Kathy and I had built the foundations for Evie's life and it was Seashell that build the cathedral, this great tower that she is now. What she can achieve as she comes to the end of her time at the college, I don't know. The world is now her oyster.”

Paul, Evie's dad



Now is the time... why your support is essential

Seashell has made a significant investment of its own towards the campus transformation and, more recently, sold some of its landholding to release funds. But we still need further funds to deliver this critical project.

The Transforming Lives Appeal enables us to boost this investment whilst giving others the opportunity to make a difference. Thanks to the generosity of our supporters, we have already raised several million pounds from those who share our vision.

But we can't stop now. We need to attract the support of individuals and organisations able to make leadership gifts, share their business acumen and influence others to raise £10 million in fundraising for the next phase of our vision.

Donating to the Transforming Lives Appeal is an opportunity for supporters to directly enable a major transformation in the lives of the most vulnerable children and young adults, now and for years to come.

It is an opportunity to make an innovative investment. One that will support a truly world-class campus that will lead the way in the sector and inspire others to learn from our expertise.

Our vision is to make the future a better place for the children, young adults and their families we support. With your help we can greatly improve their quality of education and their quality of life. At Seashell we're dedicated to making that happen.



... and it doesn't stop there

Never a charity to stand still, Seashell is already looking towards 2030.

We are committed to supporting children and young adults and their extended families before they come to Seashell, while they are here and after they leave us. Here are just a few of our thoughts.

Best start to life

Supporting families whose children have additional needs at the earliest opportunity has been proven to improve life-long outcomes. Not just for the child but, not surprisingly, for the whole extended family. The government's early years' healthy developmental review highlights that the first 1001 days of a child's life are crucial to their development. Even more so for babies born with complex needs. Our plans for an Early Years' programme will provide families, who are often in crisis, with timely and seamless support and guidance when they need it the most.

Keeping close

Placing your child in residential care is not an easy decision to make and so having somewhere comfortable to stay when coming to visit, often having driven for many hours, is the least we can do. We are exploring the concept of hotel-style accommodation on the campus where families can relax and enjoy their stay.

The world of work

Everyone should have the opportunity to enter the world of work. It's about self-esteem, self-worth, contributing to society. It should be no different for our college leavers. With a small number of enlightened companies having offered part-time paid employment, Seashell would like to be able to offer on-going support for leavers to help them realise their potential.

Thoughts from some of our major supporters

"Once you have seen for yourself the challenges faced by the young people how could you not help?"

"Before we came to Seashell we hadn't realised how difficult the lives of these children and families must be. We just want to help."

"As soon as you visit the premises you see the acuteness of needs, to which most of us have no exposure in our daily lives; it's very compelling and emotional."

Now you can play your part.



Call us on 0161 610 0100

Email us at fundraising@seashelltrust.org.uk

Visit our website www.seashelltrust.org.uk

Seashell, Stanley Road, Cheadle Hulme, SK8 6RQ

