

Seashell Matters

Autumn/Winter 2023



Seashell

Patron Her Late Majesty Queen Elizabeth II

Contents

Hello and welcome	3
Seashell in the news	4
Sharing our specialist knowledge	6
Celebrating Team Seashell	8
Riding the wave	9
Ready for a challenge?	10
Oscar steps up for Seashell	11
Aidan's story	12
Donate	13
Thank you!	14
What's on in 2024	

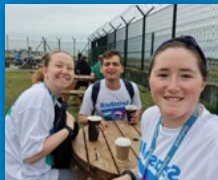
[Back page](#)

Sam's charity walk for Seashell

Seashell Royal College Manchester student and resident Sam, walked an incredible 8 miles in aid of Seashell!

Sam, along with Courteney and Jen, took on the challenge, raising over £400 for Seashell. The trio set off from our campus on a route that took them past the Manchester airport runway, across the beautiful Cheshire countryside and back through Quarry Bank Mill.

Everyone at Seashell is so proud of the team and can't thank them enough for their fundraising efforts!



Hello & welcome

to the autumn/winter edition of Seashell Matters...

As we say goodbye to the summer months, we welcome the festivities that autumn and winter bring, and as our Bicentenary year draws to a close, we can reflect on some monumental milestones past and present. Not forgetting those that will shape our future.

2023 is, and will always be a very special year for Seashell as the state-of-the-art Moulding Foundation Building, the new home to Seashell Royal School Manchester, opened its doors.

We embarked on this crucial stage in the transformation of our campus back in 2017 and seeing the students transition so successfully to a new school building - one that has been designed to support their needs - has been a key moment in the history of Seashell. We also enjoyed welcoming our friends and supporters to the official launch of the building to celebrate and view first hand the incredible facilities and equipment. The remarkable generosity of individuals and organisations has enabled Seashell to move a significant step forward in its transformation and we are forever grateful.

This summer we welcomed the return of our community fair, Seashell Shine. It was a truly memorable day that brought so many families, students and staff - past and present - together to enjoy the fabulous entertainment and activities, view our Bicentenary exhibition and support us through our charity fundraising. We also took time to say a great big 'THANK YOU' to our staff team during Team Seashell Day, which saw 24 hours of appreciation to our colleagues who, every day, make a huge difference to the lives of children and young adults with the most complex disabilities. It was with great pride that we were able to appropriately recognise the hard work of our team.

As well as the many opportunities we have had to celebrate this year there have been challenging times too. Notably having to close our college building and bring forward a planned relocation at extremely short notice during the Easter holidays due to the presence of RAAC. In true Seashell fashion we acted quickly and effectively as a team, our main priority being to minimise the impact on college students.

As we look forward to 2024, I am thrilled to let you know that we will see the return of our Seashell Ball, aptly titled the 'Beacon of Hope Ball'. Seashell has been a beacon of hope for thousands of families of children and young adults with the most complex disabilities over the last 200 years and we will continue to be for many years to come. A huge thank you to our headline sponsor, Together Money - we look forward to sharing further updates very soon.

I do hope you enjoy reading this issue of Seashell Matters - please don't hesitate to get in touch with our team if you would like to get involved in supporting Seashell in the future!

Brandon Leigh

Chief Executive, Seashell



Seashell in the news...

You may have seen that Seashell Royal College Manchester was included in the list of over 100 schools and colleges affected by Reinforced Aerated Autoclaved Concrete (RAAC), shared by the Department for Education (DfE).

As a result, we have had a significant amount of media interest, to share our story and discuss the impact this has had on our students, staff and the future of Royal College Manchester. From appearances on ITV and BBC news, to an article in FE (Further Education) Week, to featuring on BBC Manchester Radio and Hits Radio Manchester – you can watch the clips on our YouTube channel @seashelltrust1823.

Some of our students and staff relocated earlier this year to our former school building, Dockray, with the remaining joining them in September, to start the new academic year together under one roof.

Clare Sefton, College Principal said: “Although we are fortunate to have Dockray as the temporary home for college, it is not designed to meet the very complex needs of our cohort.



The acoustics and lighting present significant challenges for our students, particularly those with autism. Classrooms are considerably smaller than we are used to, and some classes have had to be split up to ensure each student has adequate space. Some of our students with multisensory impairments (MSI) need to map their environments to help them navigate their way around the building, and having to build their confidence in this new space is going to take some time.



Despite the challenges we face, I am incredibly proud of how the team have dealt with this

change. Using their expertise and knowledge, they have successfully ensured students continue to receive the very best education and support – it's been no mean feat and it has highlighted the strength of our workforce.”

Mollie Murphy, Seashell Student Ambassador said: “It was a big shock for students when we were told we



had to move. It was very sad and I was really anxious about not seeing my friends every day.”

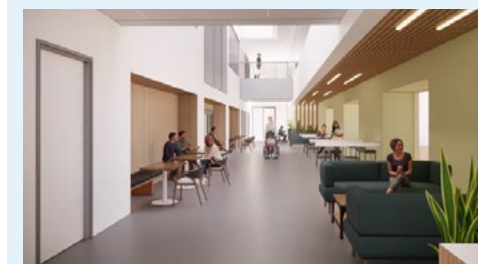
We are very proud of the progress we have made so far with the transformation of our campus, and we are incredibly thankful to you, our supporters who have helped us on our journey to providing the children and young adults that we support with the very best facilities and experiences.

We hope that you will join us on the next phase of our Transforming Lives Appeal – we now face the significant challenge of raising £10 million to build a new college, with £1.5 million raised to date.

Seashell
Transforming Lives Appeal

Building a better future...

We have an ambitious vision, that will benefit the lives of children and young adults who require the most specialist support. Our plan will positively impact thousands of lives, for many years to come. To do this we need your support.



This new, world-class facility will transform the experiences of young adults with the most complex disabilities and communication needs. It will allow us to continue providing the very best support to our college students and their families.

Our ambition doesn't stop there. We will continue to develop in order to enhance the experience for the children and young adults we support.

Sharing our Specialist Knowledge

We are delighted to announce that Seashell have been awarded a contract from the Department for Education (DfE) to deliver a Multisensory Impairment (MSI) Mandatory Qualification (MQ) from September 2024.

Multisensory Impairment (MSI) means that a child or young person has impairments with both sight and hearing – their sensory loss may be present at birth or acquired later. Most people with MSI will have some useful vision and hearing; however, there are some individuals who are completely deaf and blind.

The combination of sight and hearing impairments can actually cause additional challenges for the individual,

such as problems with balance and spatial awareness – this is why we talk of multi-sensory impairment (MSI), but you may also hear the term ‘deafblind’.

We support many children and young adults with multisensory needs from across the country, often from a very young age. The team of professionals at Seashell, including Qualified MSI Teachers, Speech and Language Therapists, Occupational Therapists, Audiologists, and Habilitation Specialists work together to deliver a holistic approach to supporting this unique population of learners.

Deafblind (MSI) students require highly specialist teachers to maximise their potential to learn. This qualification will provide teachers with the specialist knowledge to ensure those learners have the best opportunities in preparation for adulthood.

The MSI MQ contract, awarded by the Department for Education (DfE), makes Seashell one of just two providers delivering this specialist

course in the UK. This is welcome news for the Sensory Impairment (SI) sector and for MSI especially, as it will give more opportunities for MSI learners, their families and naturally, the professionals working with them.

Affiliation negotiations are underway with University providers and we hope to provide an update on this very soon.

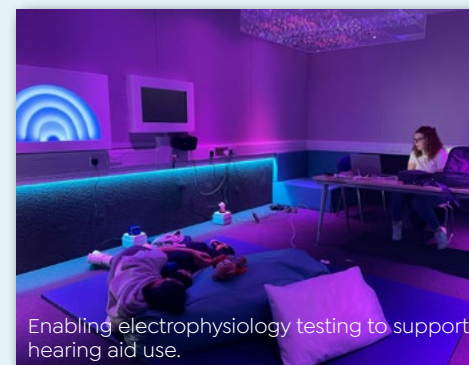
Michelle Jones, Head of Seashell Sensory Services said: “The Sensory Support Team at Seashell are thrilled to have been awarded the contract

from the DfE to deliver the postgraduate mandatory qualification in MSI (Deafblindness). As a highly trained specialist team of practitioners, we look forward to sharing our knowledge and expertise to train the next generation of MSI teachers, empowering them to improve the outcomes for MSI children, young people and their families.”



Our industry leading Audiology service

We are grateful to be able to offer our services in an environment and with facilities that are best-in-class. A fantastic example of this is our new audiology suite located within the Zochonis Assessment Suite in the Moulding Foundation Building.



The audiology suite is purpose built for children and young adults who may find clinical testing difficult to participate in. Our audiologists can create an environment that encourages calmness, relaxation or natural sleep.

Verity Langlands, Principle Audiologist said: “We are very proud of our new suite, and don’t think there is anything that resembles this elsewhere in the UK. We’ve already seen how the suite can benefit our students to access audiology care by creating an accessible and immersive space.”

We are now excited to be able to offer ear waxing services to external clients. Get in touch with outreach@seashelltrust.org.uk for more information.



Celebrating Team Seashell

We have a highly skilled, talented and passionate staff team at Seashell, all working hard together to transform the young lives of those with the most complex disabilities.

To recognise our fantastic team we held a series of events in

July to extend our appreciation and celebrate their amazing work.

Team Seashell Day - 24 hours of reward and recognition - kicked off on *Magical Monday* with a day

of fun for staff and their families including street food, live music and entertainment.

This was quickly followed by *Tranquil Tuesday* where staff were treated to a menu of health and wellbeing activities including massage, yoga and a sound bath experience.

The 24 hours culminated in a very special Team Seashell Awards evening, hosted by comedian, Harry Stachini and aimed to celebrate those members of staff who, in the eyes of their colleagues, have achieved something particularly outstanding this year.

It was an amazing celebration and a true reflection of the spirit of Seashell - we look forward to more events like this in the future.



Riding the wave...

Senior teachers at Seashell Royal School Manchester have introduced an innovative **Positive Behaviour Support** programme, **Riding the Wave**.

The children and young adults at Seashell can experience heightened emotions, triggered by changes in routine and physical environments. Teaching staff are well attuned to recognising students' emotional states, and have introduced an innovative data capturing tool to help identify and reflect on when students are more or less stimulated to learn.



Riding the Wave documents a student's mood throughout the day, acknowledging external factors that may have contributed to positive behaviours, or those of concern. Senior Teacher, Rachel at Royal School Manchester said: "This approach is student led, and uses behaviours as



a form of communication, allowing students to express their personal preferences on what activities they prefer, rooms they feel most comfortable in and more importantly, which situations they find difficult to tolerate. From 'very anxious' to 'calm', to 'highly receptive' - behaviours are monitored on a regular basis, throughout the day."

The Moulding Foundation Building gives staff, for the first time, the ability to adapt spaces to compliment students 'sensory diet' - sensory input needed to stay focused throughout the day. Factors such as lighting, sound and temperature can transform a room and bring a student into the right place to learn.

Students have been showing a positive change in their behaviour since moving into their new surroundings. Overall there has been a decrease in incidents within the classroom and an 80% increase in students displaying calm/regulated behaviour.



Every day the children and young adults at Seashell face significant challenges, but thanks to the care, education and encouragement from our dedicated teams and volunteers, they can meet those challenges and achieve their goals.

We have a host of challenges for you to get involved in. From the Tour de Manc, to the much loved Dragon Boat Race...or perhaps you have an idea of your own that you would like to try?

Get inspired...

Huge congratulations to all the amazing cyclists from Together Money who together with Seashell's Relationships Director, Dominic Tinner completed their London to Paris bike ride, raising over £20,000 for Seashell!

Dominic said: "The team had their work cut out for them as we cycled 350 miles in 4 days, sometimes in

40C heat! Thank you to everyone who donated."

Principal of Royal College Manchester, Clare Sefton and Financial Controller, Claire Boyle, are travelling to India to take on the Dalai Lama Himalayan Trek tackling 50 kilometres at 4,000m of altitude!

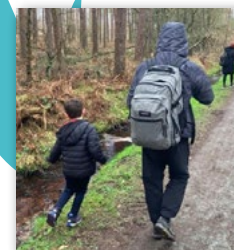
Clare said: "We are seriously stepping out of our comfort zone to raise funds for an immersive space in the new College building...wish us luck!"

Get in touch with our team who will support you along your fundraising challenge journey: fundraising@seashelltrust.org.uk



Oscar steps up for Seashell

One person not afraid of a challenge is six-year-old, Oscar, who smashed his challenge to walk 100km in 100 days. He covered a total of 179km, raising over £1,500 for Seashell!



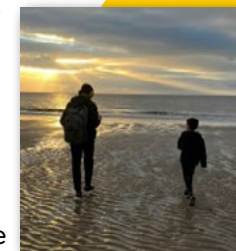
Oscar set himself this challenge after taking a walk in Lyme Park with his Mum, Jenny Ritchie, Seashell's Children's Short Breaks Registered

Manager. During the walk, the pair happened to bump into Seashell resident, James, who was also enjoying exploring the park with his support staff.

Jenny said: "Oscar became curious about James, asking questions about how old he was and how he could communicate. During the challenge, Oscar was able to explore a range of outdoor spaces with James. He also met other Seashell residents, all the while learning more about children and young adults with complex needs and communication challenges. I am incredibly proud of Oscar and his kind and curious mind. I want him to grow up demonstrating empathy and have an awareness of inclusion."

Oscar said: "I have loved making friends with James. James does fun things with me! I will show and tell people the different ways that the young people at Seashell talk. My legs are tired now, but I want to think about a new challenge next year!"

To commemorate this incredible achievement, Oscar was invited to Seashell to receive a special, 'Seashell Superhero' goodie bag and certificate. #TeamSeashell would like to thank Oscar for taking on this challenge and for being an amazing advocate for our students.



The money Oscar raised will help our mission to ensure children and young adults with complex needs are able to access inclusive opportunities and prepare for a happy and fulfilled adult life.



Aidan's Story

Imagine not being able to relax and enjoy social spaces, or even eat your lunch with your peers? This was the case for Royal School Manchester student, Aidan, who would spend days in a room to himself in the school's former building as the communal areas were too uncomfortably noisy and bright for him to tolerate.



Jump forward several months and Aidan is now getting accustomed to his carefully designed classroom in the Moulding Foundation Building - the new home to Seashell Royal School Manchester. Thanks to the acoustically treated communal spaces Aidan has been able to develop his ability to share spaces with classmates and making new friends in the process.

Aidan's teacher, Emily said:

"This has been truly life changing for Aidan. He now not only feels safe and comfortable in communal areas at school, but also has been able to access activities outside school that were just not possible before. With the combined effort of his teachers, support staff and family, plus access to these state-of-the-art facilities, Aidan can now take part in more opportunities available to him and more importantly, enjoy doing so."



Donation form 2023

We're so pleased you'd like to help children and young adults with the most complex disabilities. We'll use your details to fulfil your request. We may contact you again by post or phone to tell you more about our services and other ways you can help, including opportunities to donate, volunteer or fundraise.

Please tear off and return your donation in the Freepost envelope provided or send to Seashell Trust, Stanley Road, Cheadle Hulme, Cheshire, SK8 6RQ.

Title: _____ First Name: _____ Surname: _____

Address: _____

Postcode: _____

Email: _____

I would like to make a donation of: ☐ £20 ☐ £50 ☐ £100 ☐ Other amount: _____

☐ I enclose a cheque (please make payable to Seashell Trust)

☐ I would like to donate by credit/debit card

You can also donate on our website www.seashelltrust.org.uk

Please leave a telephone number below and we will call you to take your donation, or call us on **0161 696 9384**.

Your contact telephone number: _____

☐ To provide ongoing support to Seashell I'd like to set up a regular gift - please send me a standing order form.

Staying in touch

Please let us know if you're also happy to hear from us by email and text.

☐ Yes I'd like to hear from you by email

☐ Yes I'd like to hear from you by text

We promise to keep your details safe and never sell or swap them with anyone. Our privacy policy explains how we keep this promise. If you don't want to hear from us, or change your mind about how we contact you, email info@seashelltrust.org.uk or call **0161 610 0171**.

If you are a UK taxpayer your donation will be worth 25% more!

☐ Gift Aid is reclaimed by the charity from the tax you pay for the current tax year. Your address is needed as a current UK taxpayer. I want to Gift Aid my donation and any donations I make in the future or have made in the past 4 years to Seashell. I am a UK taxpayer and understand that if I pay less income Tax and/or Capital Gains Tax than the amount of Gift Aid claimed on all my donations in that tax year it is my responsibility to pay the difference. (please tick box)

giftaid it

THANK YOU!

Over the last two centuries, our charity has been able to provide children and young adults with the most complex needs the very best education and care thanks to generous supporters like you.

Thank you to everyone who has taken on a challenge for Seashell this year...

To Citation, Sharp and Insight who took part in our Snowdon at Sunset challenge.



To the team from Anderselite for taking on the Yorkshire 3 Peaks and raising an incredible £2,385!

Thank you to our incredible supporters from Together Money who took on the sunrise climb of Scafell Pike in July raising over £6,000.



their physical challenge at Eden Valley at raising £655 for Seashell.

We are lucky to have the support of fantastic corporate volunteers throughout the year...

Thank you to Unity Trust Bank for generously presenting us with a £500 cheque whilst taking part in their corporate volunteering day at our campus.



To our volunteers from Together Money, Citation, Cushman & Wakefield for getting stuck in, supporting this years Seashell Intercollege Sports Day with Natspec. What an incredible day it was cheering along the amazing young adults taking part!

Thanks to the Rotary Cheadle District, Slater & Gordon, Amazon, Co-operative Bank, Royal London, and SHARP for supporting us at Seashell Shine, our community



Summer Fair. From supporting with set up prior to the event, donating gifts towards our tombolas, to volunteering/running their own stalls on the day helping us celebrate our Bicentenary.

Thanks to Insight for raising an incredible £8,000 at their first charity golf day in aid of Seashell

Thank you to everyone who attended the Seashell Golf Day in September, sponsored

by our friends at Bentley Manchester.

The generosity of the guests that attended raised over £8,000.

Congratulations to the team from Beyond Law Group who were the winning team on the day!



Finally, thank you to Danny and Alistair from Tour de Manc who presented Seashell with a cheque for £7,500 from the money raised from this years Tour de Manc.



As a charity, we rely on fundraising to support **the everyday needs of our students.**



Supporting Young Lives

To enable us to offer the children and young adults we support with the best experiences, we require funding for **specialist equipment, additional enrichment activities, extracurricular clubs** and opportunities to simply have **fun**.

Family Support



We believe in offering tailored family support both to Seashell parents/carers and the wider community. To do this we require funding for **family experiences, specialist support, advice, training, family support roles & short breaks**.

Life after Seashell



To provide valuable independence and life skills, we collaborate with organisations to provide work placements as part of our **student careers pathway**. This helps young adults in college better prepare for a future where they can thrive.

With your support, we can achieve truly life-changing opportunities for children and young adults with the most complex needs.

What's on

dates for the diary in 2024

Fundraising events

Beacon of Hope Ball
Saturday 27 April '24

Tour de Manc
Sunday 5 May '24

Dragon Boat Race
Saturday 11 May '24

The Great Manchester Run
Sunday 26 May '24

Yorkshire Three Peaks
Friday 28 June '24

Climb Snowdon for Seashell!
There are a number of dates available in 2024 between April & October.

Have an idea for a fundraising event or challenge? We'd love to help support you! Contact **fundraising@seashelltrust.org.uk**

Learn with Seashell

MSI (Deafblind) Intervenor Course
21 November '23 (5 day course)

Positive Looking
8 December '23, 9:30am-12pm

CHARGE Training
16 January '24, 3:30-5pm

Tactile Communication
19 January '24, 10am-3pm

Usher Awareness
27 February '24, 3:30-5:30pm

MSI Mandatory Qualification
Course start date: September 2024
Course length: 2 years

For more information or for bespoke training and support requests contact **outreach@seashelltrust.org.uk**

We also have BSL, Signalong and Makaton courses, please contact **info@seashelltrust.org.uk** for more information and to book.

Community events

Seashell Shine, Summer Fair
Date in Summer 2024 TBC

Inclusive Cycling Sessions
Mondays, 5-7pm
Contact: **wesley.ratcliffe@seashelltrust.org.uk**

Stockport Sensory Socials
16 November '23 - 10-11:30am
24 January '24 - 10-11:30am
14 March '24 - 10-11:30am
Contact: **outreach@seashelltrust.org.uk**

Keep up to date with what's on at Seashell by following us on social media, visiting our website events page or signing up to receive our monthly e-newsletter!

seashelltrust.org.uk