



# Seashell

## Trustee Board Member

Recruitment Pack, Autumn 2024



**Seashell**

## Introduction

Seashell Trust has a simple mission; to help children and young adults with the most complex needs, and their families, live their best lives. It is a truly inspiring place to work. We celebrated our 200 year anniversary in 2023 and have been based on our current campus in south Manchester since 1952. Our amazing workforce of over 700 staff educate and care for 150 young people who attend our school and college, 40 of whom live with us on site in our 17 residential houses.

Seashell is nationally recognised for its skilled workforce who are trained to educate and care for children and young adults who have the most complex disabilities in the UK, including a complex range of visual, hearing and multi-sensory impairments, severe and complex autism, as well as physical disabilities.

Seashell's vision is to be exceptional in educating and caring for children and young adults with the most complex needs, with an amazing workforce supporting families from its world class campus, and to share its excellence on a national and international platform.

The journey towards this vision has already begun and new, state of the art facilities are being built. Following the construction of a residential village in 2015 and a world class school and shared services building which opened in February 2023, we are embarking on the next phase of our site transformation - a new college and inclusive sports and wellbeing facilities which will to be delivered in 2026. Following this we will continue with our campus transformation, with plans for a number of capital projects including a residential village, a knowledge hub, forest school and sports pavilion, and a hydrotherapy centre.

If you would like to work for an inspirational, values driven Northwest charity and make a real difference to the lives of our very special students, please do apply for this exciting role.



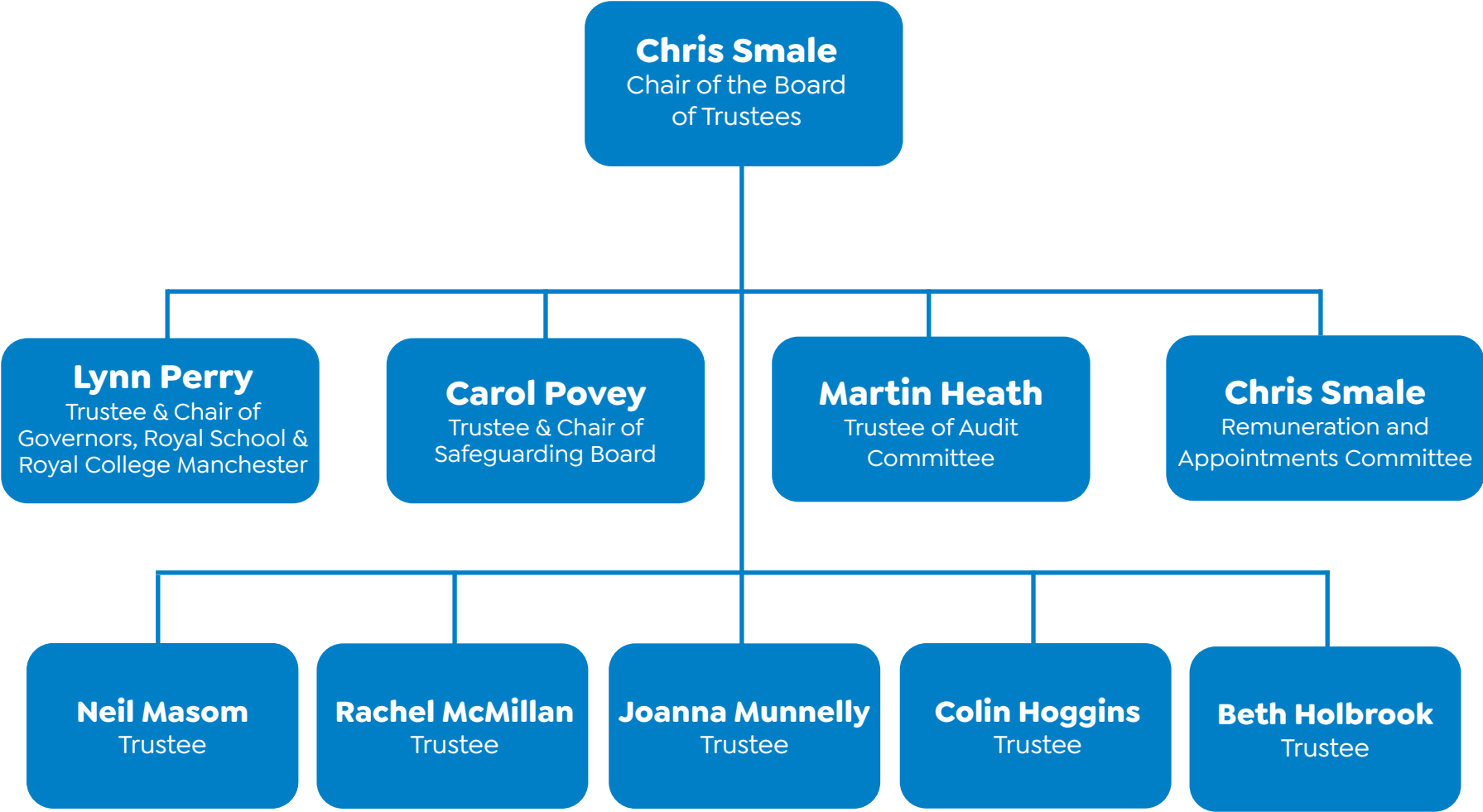
## Our Board of Trustees

Seashell has a strong, committed and experienced group of Trustees (who are also Company Directors as the Trust is a Company Limited by Guarantee) who are responsible for the overall strategic direction and governance of the organisation. There are currently four subcommittees of the Board focusing on Remuneration and Appointments, Audit and Finance, and a Transformation Project Steering Group, as well as a Safeguarding Board. Additionally Royal School and Royal College each have a dedicated Board of Governors (and appropriate subcommittees) chaired by a Trustee Board member.

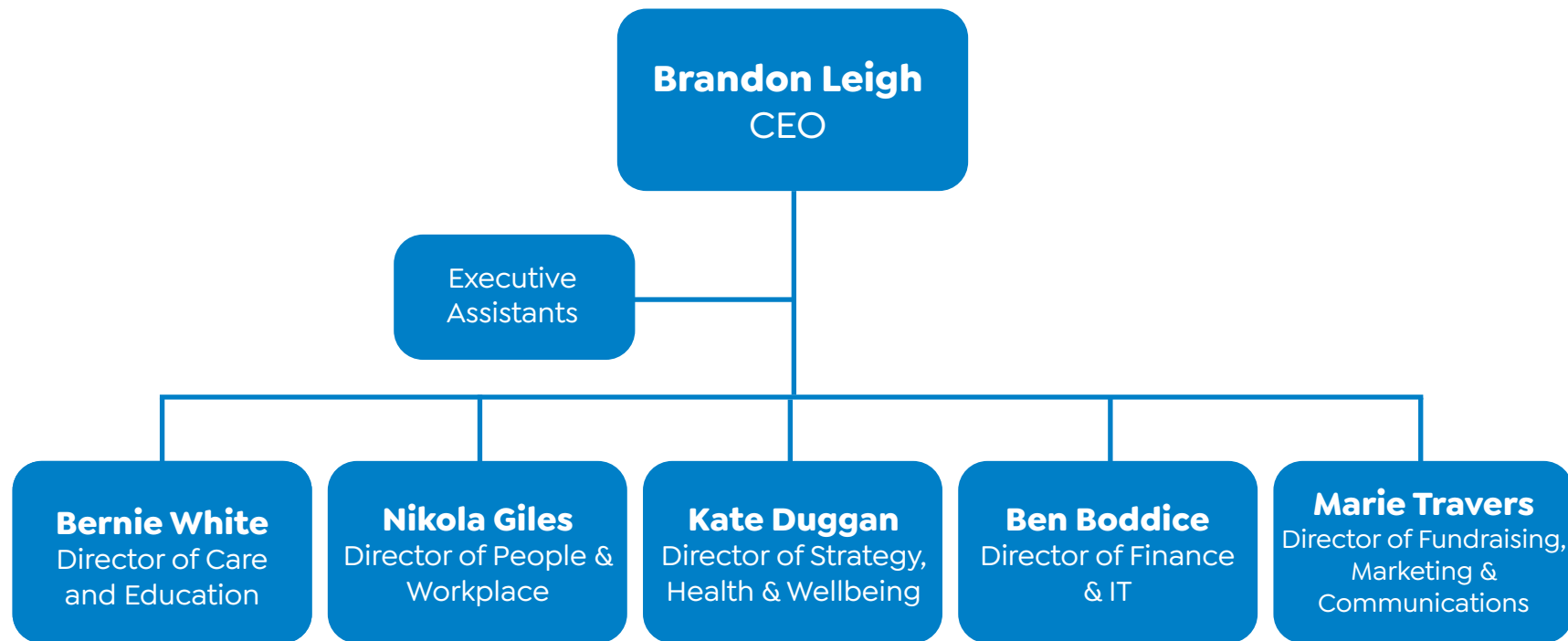
As part of our succession and enrichment strategy, we are seeking to strengthen our Board, following a refresh of our strategic ambitions, and as we continue delivery of our £60m site transformation with the imminent construction of our new Royal College Manchester, Sports, Training and Support Staff facilities. We are particularly interested in appointing someone with the time, energy and passion to commit to the Trust and support the delivery of exciting new facilities. Applicants do not require specific non-exec experience as we are eager to appoint someone who shares our passion and long-term aspirations to deliver outstanding services to children, young adults and their families.



# Board of Trustees



# Executive Leadership Team (ELT) structure







Seashell

## The Opportunity

On this occasion, we are looking particularly for someone with a background in property, social care or finance.

Whilst we are looking for specific appointments on this occasion, we are always very interested in expressions from candidates who are keen to undertake a Trustee role and who may have some specialist skills and knowledge that would support the Board's ambitious plans going forward. We are keen to ensure our Board is truly representative of the rich and diverse community that we are part of.

The Board meets formally five times a year, with a similar number of subcommittee meetings. In addition, we hope that members become actively involved with the Trust's events and wider endeavours as committed supporters of its aims and ambitions.

You would be joining the Board at a very exciting period and one of great change with the significant site transformation which is well underway.



## Seashell Brought to Life

Our team is passionate about ensuring children and young adults with the most complex disabilities have the opportunities to live their best lives. We build communication, independence and life skills, and prepare young people for a future where they are valued and valuable members of the community.

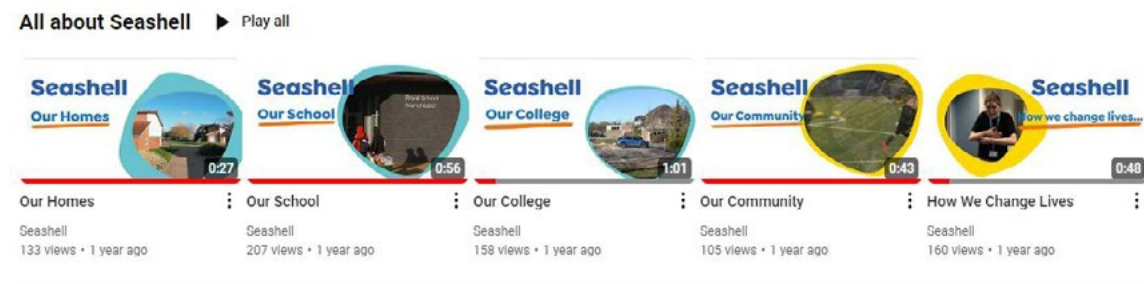
We are incredibly proud of our expert team, click the links below to find out more about what working at Seashell is like:



[Click here to watch our recruitment video](#)



[Click here to find out more about what Seashell does](#)



## To Apply

If you feel you could bring value to our Board, by offering us skills and expertise as outlined above, and would be interested to explore the possibility of joining us, as an initial expression of interest please apply and submit an informal CV outlining your experience and areas of special interest. We would also welcome visits to the Trust prior to application. As part of your application, please can you answer the below 3 questions:

1. What is your motivation for wanting to become a Trustee of Seashell?
2. Do you have any lived experience with learning disabilities?
3. Are you able to commute to Cheadle, Stockport to attend meetings and to support initiatives as a Trustee?

**Come and visit us**, please contact [recruitment@seashelltrust.org.uk](mailto:recruitment@seashelltrust.org.uk) to arrange and appointment for a site tour with our CEO, Brandon Leigh.

# Seashell

**tel:** 0161 610 0100

**email:** [info@seashelltrust.org.uk](mailto:info@seashelltrust.org.uk)

**web:** [www.seashelltrust.org.uk](http://www.seashelltrust.org.uk)

Seashell Trust, Stanley Road,  
Cheadle Hulme, Cheadle, SK8 6RQ

Registered charity number: 1092655 Company Number: 04216714

